

LENDELEDE - AFD LENDELEDE - SECTIE C		
Perceel	Kad. Opp.	Eigenaar
436E	3400 m ²	Vermaut's boerenbrood, Stationsstraat 84, 8860 Lendelede
436D	450 m ²	Vermaut's boerenbrood, Stationsstraat 84, 8860 Lendelede
435V	340 m ²	Hoornaert-Lagae, Stationsstraat 70, 8860 Lendelede
435M	243 m ²	Remaut-Callens, Stationsstraat 68, 8860 Lendelede
439G	654 m ²	Vandoorne-Quaegebeur, Stationsstraat 64, 8860 Lendelede
437G	161 m ²	Debo Fernand, Nieuwstraat 4A, 8860 Lendelede
438X2	510 m ²	Vansteenkiste-Debrabandere, Stationsstraat 64, 8860 Lendelede
1068A	19275 m ²	Gemeente Lendelede

Coördinaten hoekpunten innemingen Lambert 72 coördinaten (m)			
Nr	X	Y	Materiaal
3	71022.50	175601.07	NG
4	71022.47	175591.34	NG
5	71021.38	175582.89	NG
6	71019.94	175570.76	NG
7	71019.21	175549.74	NG
8	71019.63	175547.86	NG
9	71020.77	175543.82	NG
10	71023.66	175539.76	NG
11	71025.97	175536.83	NG
12	71038.95	175527.97	NG
13	71050.44	175520.13	NG
14	71060.43	175513.34	NG
15	71063.64	175513.69	NG
16	71066.11	175508.35	NG
18	71074.66	175487.97	NG
19	71080.61	175475.60	NG
20	71088.19	175467.11	NG
21	71095.15	175461.88	NG
22	71095.98	175461.26	NG
23	71100.57	175457.78	NG
24	71101.71	175456.93	NG
25	71103.39	175456.04	NG
26	71100.07	175453.91	NG
27	71085.11	175462.93	NG
28	71073.81	175476.04	NG
29	71074.68	175476.44	NG
30	71075.18	175479.88	NG
31	71058.65	175510.93	NG
32	71047.60	175518.46	NG
33	71037.65	175525.22	NG
34	71029.43	175530.82	NG
37	71015.51	175540.26	NG
41	71014.97	175552.15	NG
42	71014.97	175564.65	NG
43	71015.66	175564.64	NG
44	71015.69	175567.66	NG
45	71016.03	175567.61	NG
48	71017.19	175581.76	NG
49	71018.63	175601.06	NG
51	71071.58	175475.01	NG
52	71073.82	175473.66	NG
53	71079.17	175470.43	NG
54	71077.43	175467.56	NG
55	71101.78	175456.96	NG
56	71061.61	175513.47	NG
57	71066.60	175504.70	NG
58	71019.15	175555.14	NG
63	71063.19	175504.85	NG
64	71019.58	175537.53	NG
64	71016.60	175574.03	NG
65	71015.07	175547.34	NG
66	71014.98	175549.33	NG
67	71092.03	175464.23	NG
67	71090.60	175465.30	NG
68	71067.16	175506.22	NG

Tabel met tussenafstanden en verantwoording grensbepaling		
Hoekpunten	Afstand (m)	Verantwoording grensbepaling
3-4	9.73	PL (l. Wyseur dd.31/10/2019 *34025-10364*)
3-49	3.87	N
4-5	8.52	PL (l. Wyseur dd.31/10/2019 *34025-10364*)
5-6	12.22	PL (l. Wyseur dd.31/10/2019 *34025-10364*)
6-58	15.64	PL (l. Wyseur dd.31/10/2019 *34025-10364*)
7-9	1.92	N
7-58	5.40	PL (l. Wyseur dd.31/10/2019 *34025-10364*)
8-9	4.20	N
9-10	4.98	N
10-11	3.73	N
11-12	15.72	BS
12-13	13.91	N
13-14	12.08	N
14-56	1.19	N
15-16	5.89	N
15-56	2.04	N
16-68	2.37	N
18-19	13.72	N
18-57	18.57	N
19-20	11.38	N
20-67	3.02	N
21-22	1.04	N
21-67	3.91	N
22-23	5.76	N
23-24	1.43	N
24-55	0.07	N
25-26	3.94	PL (l. Wyseur dd.31/10/2019 *34025-10363*)
25-55	1.86	N
26-27	17.47	PL (l. Wyseur dd.31/10/2019 *34025-10363*)
27-54	8.97	PL (l. Wyseur dd.31/10/2019 *34025-10363*)
28-29	0.96	N
28-51	2.45	N
29-30	3.47	N
30-63	27.70	N
31-32	13.37	N
31-63	7.59	N
32-33	12.03	N
33-34	9.95	N
34-64	11.92	N
37-64	4.90	N
37-65	7.09	N
41-66	2.82	N
42-43	0.69	PL (l. Wyseur dd.31/10/2019 *34025-10364*)
43-44	3.02	PL (l. Wyseur dd.31/10/2019 *34025-10364*)
44-45	0.34	PL (l. Wyseur dd.31/10/2019 *34025-10364*)
45-64	6.45	PL (l. Wyseur dd.31/10/2019 *34025-10364*)
48-49	19.35	PL (l. Wyseur dd.31/10/2019 *34025-10364*)
48-64	7.75	PL (l. Wyseur dd.31/10/2019 *34025-10364*)
51-52	2.61	N
52-53	6.25	N
53-54	3.36	N
57-68	1.62	N
65-66	1.99	N

- N = Nieuw ontworpen
- RL = Rooilijnplan
- AB = Atlas van de buurtwegen
- AW = Atlas van de waterlopen
- KS = Kadastrale schets
- OP = Opmetingsplan
- PL = Plan landmeter
- BS = Bestaande afsluiting
- MD = Midden waterloop
- FT = Feitelijke toestand
- IL = Interpretatie landmeter
- ILF = Interpretatie landmeter op basis van feitelijke toestand

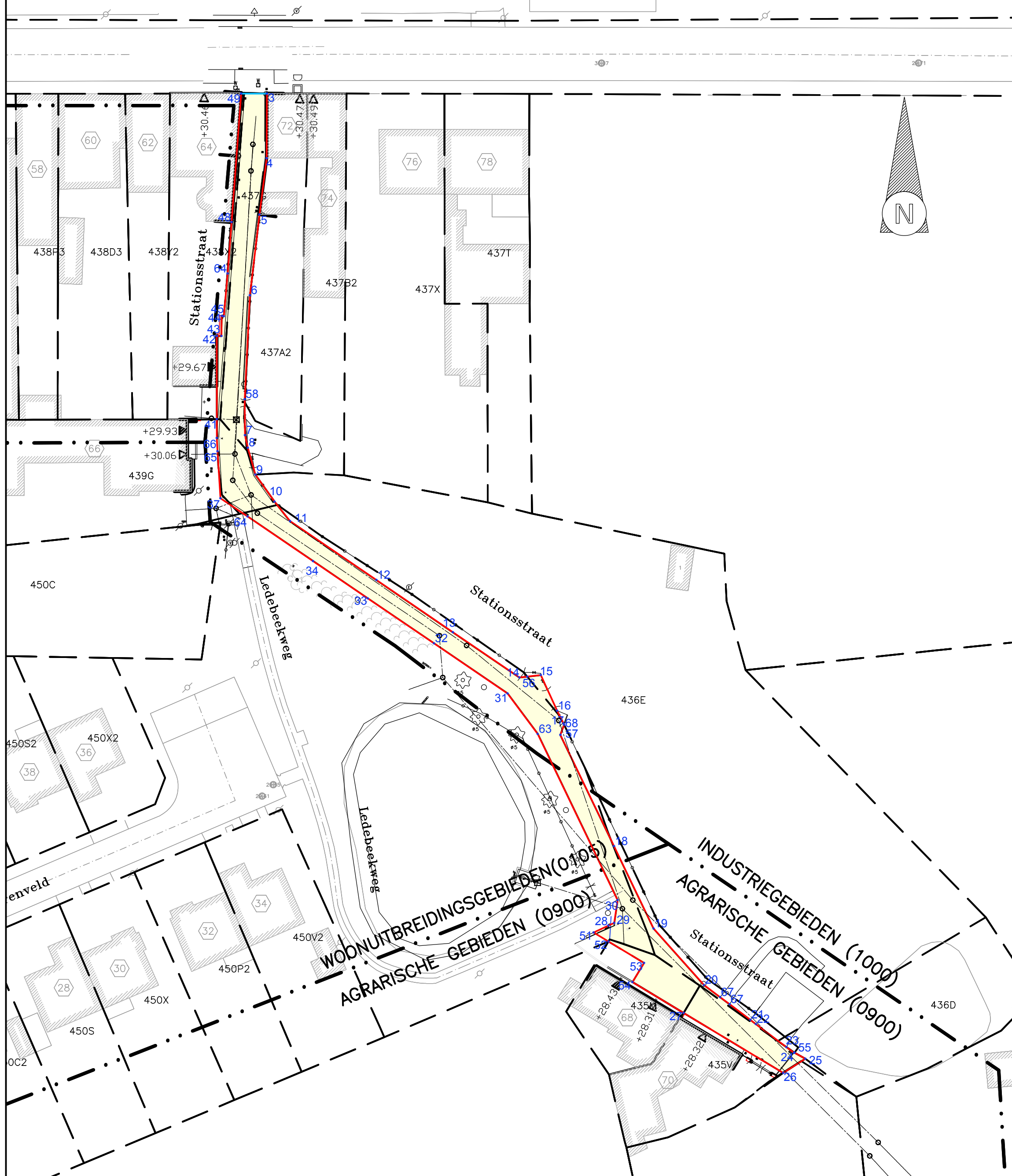
LEGENDE

- nieuwe rooilijn
- af te schaffen of te verplaatsen rooilijn
- - - kadastrale grens
- · - · - grens gewestplan
- 27 · hoekpunt
- in te nemen gronden

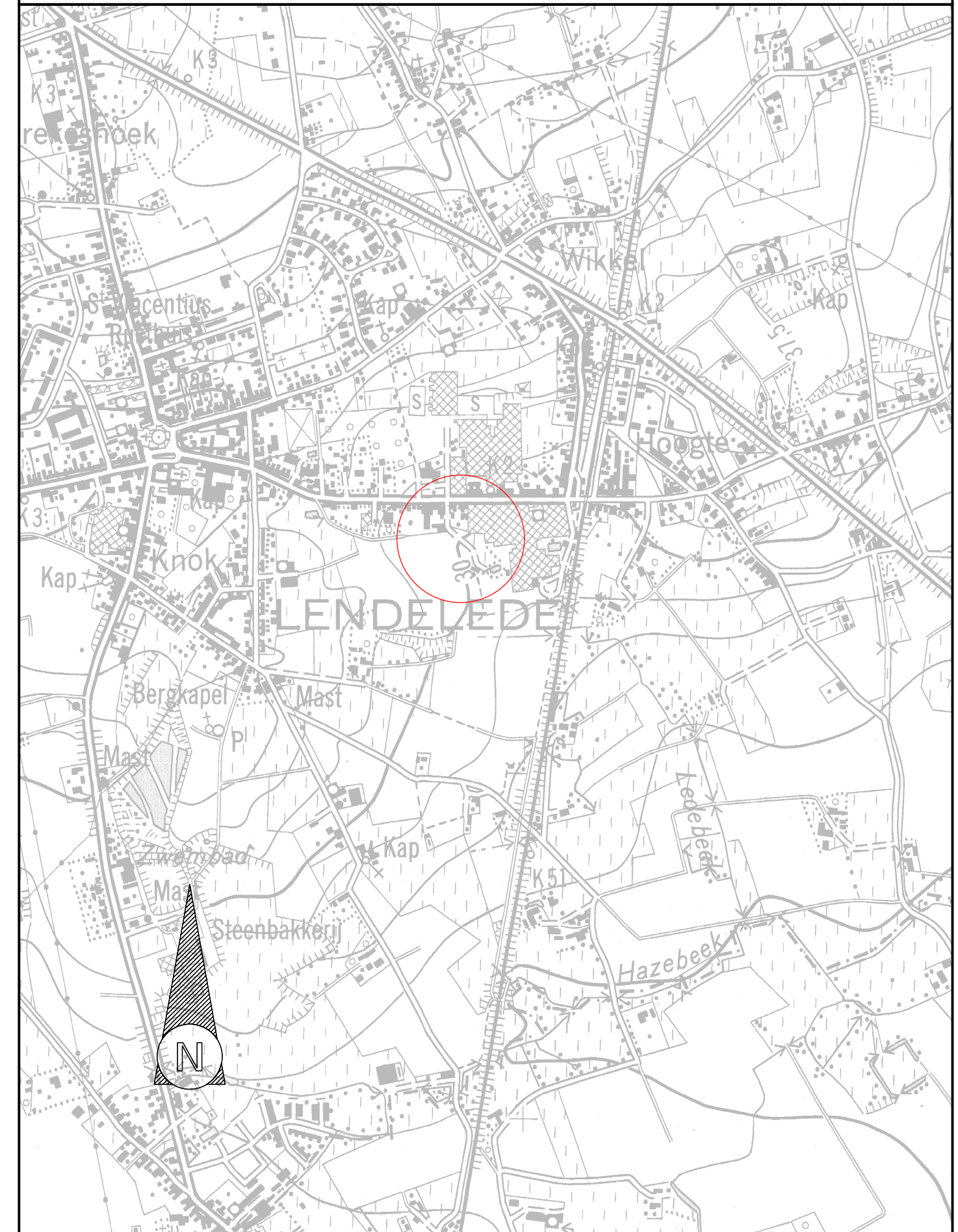
ROOILIJNPLAN

schaal 1/500

Stationsstraat



LIGGINGSPLAN - schaal 1/10.000



WEST-VLAANDEREN

LENDELEDE

LENDELEDE, SECTIE C

437G en deel van 435M, 435V, 436D, 436E, 438X2, 1068A en 439G

ROOILIJNPLAN

Datum	02/02/2021	FG	Dossiernummer	9658
Schalen	1/500		Aantal plannen	1
Nr.	Datum	Wijzigingen	Tek.	Opgemaakt door:
1	8/02/2021	Opmerkingen gemeente dd.3/02/2021	FG	 BVBA Studiebureau Jonckheere Torhoutse Steenweg 378C 8200 Brugge
2	10/06/2022	Opmerkingen gemeente dd.19/05/2022	FG	
3	25/08/2022	Opmerkingen gemeente dd.9/08/2022	FG	
Koen Jonckheere, zaakvoerder Beëdigd landmeter LAN040153 (Rechtbank eerste aanleg, 1 ^{er} kamer Brugge, 25/05/2000) tel.: 050/40 50 90 email: info@studiebureaujonckheere.be				

Voor akkoord:

ROOILIJNPLAN

LIGGINGSPLAN

Plannummer
1
Opp. plan
0.31 m²